

# Remodeling Tips

Courtesy of **HUB Remodeling** Custom Design - Professional Remodeling  SPRING 2002



765 Newtown Road  
Villanova, PA 19085

**Telephone (610) 688-7475**  
Check out our Website at  
**[www.HUBremodeling.com](http://www.HUBremodeling.com)**

PRSR STD  
U.S. POSTAGE  
**PAID**  
HICKORY NC  
PERMIT NO 212

QUALITY  
INTEGRITY  
PROFESSIONALISM  
VALUE

## A Gathering Place

Cocooning. Nesting. Gathering. Designers at the recent International Builders Show in Atlanta, Georgia searched for words to describe a powerful trend in our society today. Basically, people have re-prioritized their home and family, and are longing for a return to core values.

The trend is away from "it's all about me," to "it's all about my family." Family dinners are back, but not formal dining rooms. Instead the atmosphere is casual, centered around an eat-in bar often with take-out food. People want display areas for family hobbies and collections. Game rooms and friendly conversations are "in." Entertaining at home has become a number one priority. This desire has fueled a surge in the building industry of requests for family rooms.

*(continued on page 2)*



Photo: Courtesy of Ed Lane

*Well-designed family entertainment rooms allow us to cultivate our connectedness.*

## Inside This Issue...

- A Gathering Place
- Pretty (?) In Pink
- Countertops: Tile
- Color's Homecoming

Visit [www.HUBremodeling.com](http://www.HUBremodeling.com)

## Kitchen: Pretty (?) in Pink



Kira, a cockapoo puppy, is pictured here with his "sister", Rachel. "Their" parents are the clients whose kitchen is featured on the back page. Both Rachel and Kira adjusted quite well to the disruption of remodeling. Kira, however, became quite possessive of the tarps used to cover the floors and of the lead carpenter, Steve Ostroski.

HUB Remodeling contacted the owners of this Devon home through the National Kitchen and Bath Association website. As a courtesy, we send brochures to those in our area who have posted on the NKBA site their interest in redoing a kitchen or bath. After receiving HUB's information, the

*(continued on page 4)*



## A Gathering Place

(continued from page 1)

The family room addition featured here is a perfect example. The homeowners enjoyed their existing 2 1/2 story brick colonial in a well established neighborhood. They had no desire to move. However, they wanted to provide a large, inviting space within their home where friends and family could gather. A place where people would feel welcome and could be entertained. The children were reaching their pre-teen years and they needed more space indoors to spread out with friends, and also have direct access to the outside.

The project began with an extensive information gathering process with the homeowners and their contractor. They discussed furniture placement, entertainment needs, their electronic entertainment equipment, and all the little details that make a room work. The homeowners wanted something unique and different—not the usual run-of-the-mill family room.

The end result of this thorough design process was a unique, over-sized family room that feels just right. The big room was designed specifically with several different use areas—each one flowing into the next. There is a casual sitting area that has a soaring natural stone fireplace and artistically arranged windows. Another is a pool table/games area, while a third incorporates an entertainment center for stereo, high definition TV, etc.



Photo: Courtesy of Ed Lane



Photo: Courtesy of Ed Lane

with special shelving and unique solutions to ventilation requirements. There is also a computer station, bar, new direct access back into the main house, and it all opens out onto a large entertaining-size deck. The deck offers good traffic circulation with access to the family room and the kitchen.

A steel ridge beam was used to carry the load and support the large span, eliminating the need for any interior supports that would destroy the design or get in the way of fur-

niture placement. The room boasts a beaded board ceiling with exposed wood beams (non-load bearing), natural oak hardwood floors, "Venetian Gold" granite countertops in the bar area, lots of creamy white cabinetry for storage, and a cozy fireplace with gas logs. The interior and exterior blend artfully with the rest of the home's traditional styling.

What this all amounts to is a comfortable, multi-functional place for the family to gather.

## Countertops: Tile

Tile is a versatile material used for practically every kitchen surface. Even more popular today for backsplashes than for countertops, it is valued for its durability. The variety of colors, shapes and patterns available in tile make the design possibilities endless.

Of the three main types of tile—ceramic, porcelain, and quarry—porcelain is the toughest, since it is baked at a higher temperature and becomes very dense. The surface of a porcelain tile is virtually waterproof

and resists scratches, burns and stains. This makes porcelain the best choice of tile for countertops.

Tiles can be glazed or unglazed, and the glazes can be matte or glossy. Some of the glossy pieces seem to be almost translucent.

There are beautiful hand-painted tiles, and tiles with three-dimensional patterns and textures that are recommended to be used on vertical surfaces. New, exciting tile products include glass tiles, and tiles with a



Questech® Metals polished copper tiles gleam in this backsplash.

Photo: Courtesy of Crossville Porcelain Stone/USA (www.crossville-ceramics.com)



# Color's Homecoming

By Barbara Schirmeister, ASID



Consumers are opting for innovative colors and special effects in home design.

This new presentation of color has sparked a growing number of consumers to become more creative when decorating. Each year, the Color Association of the

United States (CAUS) gathers its panel of designers and interiors professionals to forecast future color trends for manufacturers of environmental and interiors products. The result is that the consumer may purchase home products—from appliances to fabrics to flooring—that are color compatible. CAUS's recent forecast looks to water, air and translucence as important influences in its 2002-2003 color palette. In addition, sophisticated hues are emerging as consumers are concentrating more on their home and family values.

Experimenting with these new colors in their home décor is the perfect way for consumers to customize their surroundings—indoors and outdoors. The new use of color can be seen in the saturated or multi-colored shades and can also include softened colorations such as airy blues, fresh greens, merest yellows and petal pinks—today's neutrals. Rich colors are seen as well: gracious greens, regal blues and opulent golds are as timeless as they are naturally beautiful.

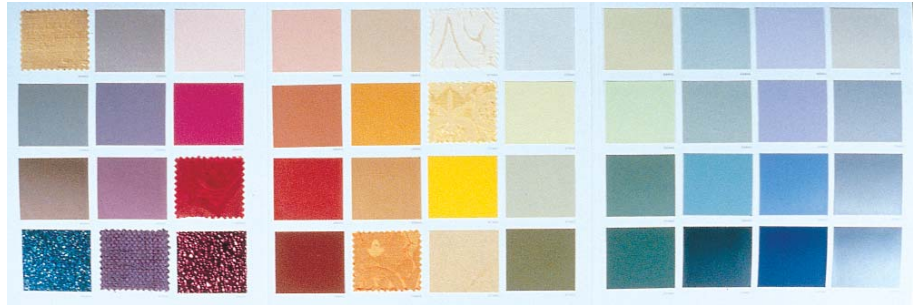
Another trend, which points toward the increase of color, even in a subtle form, is the use of traditional neutrals combined with accent hues. These accents can include

metallic surface. These can be used to create unique walls and backsplashes.

To clean tile, use spray cleaner or water with vinegar or just wipe with hot water. Any spray cleaner that is not abrasive is fine to clean the metal or glass tiles.

When choosing grout, keep in mind that there are a myriad of colors. Selecting one similar in color to the tile will result in a more unified look. Professionals recommend using an epoxy grout to help protect the grout against staining or mildewing.

One drawback of tile that is often mentioned is that the surface is not smooth enough for cutting or rolling dough. However, the current trend for placing a variety of surfaces in kitchens, based on their end usage, makes that less of an issue.



*Environmental/Interiors Forecast palette for 2002-2003 by the Color Association of the U.S.*

colors reminiscent of water, translucence or anything that mirrors colored glass.

Special effects—first in fabric and now in tile and other home furnishings—have caught the glimmer of the consumer's eye. An increasing number of designs exhibit special effects such as translucence, pearlescence or the hint of metal. These effects create products that outshine the ordinary! Consumers are spending more time at home and therefore are looking for color that's as interesting as it is individualized.

*Internationally renowned color expert Barbara Schirmeister, ASID, is a long-time member of the Interiors Committee of the Color Association of United States, helping to formulate the annual Environmental/Interiors Forecast palette. She has served for many years as color/style consultant to a number of major manufacturers of home furnishings, building products and finishes.*



*The new indoor/outdoor Aurora tile from Crossville Porcelain Stone/USA is an example of a color recommendation made by Barbara Schirmeister. It is offered in four colorways and no two tiles are alike in color or texture.*

Photo: Courtesy of the Color Association of the US ([www.colorassociation.com](http://www.colorassociation.com))

Photo: Courtesy of Crossville Porcelain Stone/USA ([www.crossville-ceramics.com](http://www.crossville-ceramics.com))

## Pretty (?) In Pink

*(continued from page 1)*

homeowners called to schedule an appointment, and the rest is history.

The kitchen was small and pink with nowhere to go. Because of its location in the house, adding on was impractical. The kitchen had some great features which served as the cornerstone of a functional and eye-catching transformation.

The clients wanted to achieve a clean, contemporary feel in the kitchen. The cathedral ceiling and skylight already existed, so we were able to use 42" wall cabinets in a room flooded with natural light.



*The "kitchen in pink," below, was given an eye-catching transformation with Shaker-style cabinetry and contrasting appliances (above and left). Opening the walls gives a sense of spaciousness, supplemented by well-placed lighting and beautiful oak hardwood floors.*



The Shaker-style cabinetry is Canadian maple with a natural finish. GE appliances in black contrast well against the light maple cabinets and the slide-in range provides no obstruction to the backsplash. The refrigerator was selected for its textured black exterior. Set between two 36" pantries, the black refrigerator "broke up" the cabinet wall, and its texture reflected the leather-like laminate countertop.

An existing pass-thru to the family

room was redone, and we created a second pass-thru to the dining room. By opening the walls an illusion of spaciousness is created in a very small room.

Lighting was key to the success of the design. We used large cloud fluorescent fixtures on the ceiling to fully illuminate the room. Indirect lighting is provided by fluorescent lights installed behind the crown moulding at the top of the wall cabinets. The pass-thru windows are lit by recessed fixtures,

and there are undercabinet fluorescents as well.

The original pink indoor/outdoor carpeting was replaced with site-finished hardwood floors of natural oak. The walls and ceiling including the exposed beam were painted white which serves as the perfect backdrop for the ceramic pieces made by the homeowner and the tiles she plans to make for the backsplash.