

HUB of the Home

Courtesy of HUB Design/Build Custom Design - Professional Remodeling  AUTUMN 2003

HUB
Design/Build

Innovations and Solutions
765 Newtown Road
Villanova, PA 19085

NKBA
The Finest Professionals in the Kitchen & Bath Industry
National Kitchen & Bath Association®

AMERICA is
REMODELING
with
NARI
PROFESSIONAL REMODELERS

Telephone (610) 688-7475
www.HUBdesignbuild.com

PRSR STD
U.S. POSTAGE
PAID
HICKORY NC
PERMIT NO 212

Going to the Movies

The smell of freshly popped corn, the aisle lights guiding you to your seat, the plush recliner adjusting with built-in motorized controls, the wide screen covering the wall in front of you—all of this suggests that you are really “at the movies.” The lights dim, the beams of the projector hit the screen, the sound begins to envelope you with a heart-thumping intensity—and you are off to the magical world of a dedicated home theater.



Photo: Courtesy of Zach Simpson, Innovative Systems

(continued on page 2) *A luxurious dedicated home theater as seen from the cushy comfort of the lounge seating.*

Inside This Issue...

- HUB Earns Certifications
- Flooring Trends: Bamboo Flooring
- Emotional Sanctuary at Home
- This Kitchen Becomes an Asset!



Front L-R: Lynne Stephenson, CR; Mark Stephenson, CR
Back L-R: Steve Otrowski, CLC; Steve Coleman, CLC; Matt Hunsecker, CLC

HUB Earns Professional Certifications

NARI, the National Association of the Remodeling Industry, offers various certification programs to establish a level of competency and professionalism for the remodeling industry. Two of the certifications are Certified Remodeler (CR) and Certified Lead Carpenter (CLC). Both of these programs consist of a 12 to 14 week study group that culminates in a full day written exam. There are stringent requirements that must be met prior to sitting for either of these exams.

(continued on page 4)



Going to the Movies

(continued from page 1)

An entertainment room is a very popular space today for homeowners to spend time in. This is a multipurpose room, which may include a fireplace, pool table, wet-bar, game table, sitting area with sofas and chairs, and a large-screen television. It is a wonderful, inviting place for people to gather and engage in a wide variety of activities together.

However, when you describe a room designed with the express purpose of accurately re-creating the theater experience, right down to the tremor you feel in the floor when the aliens land, you are talking about a dedicated home theater. Here, away from the crowds and the distraction of other movie patrons whispering during the quiet scenes, you can fully enjoy the show.

These windowless rooms use dimmer-controlled ambient lighting to create the mood. Careful attention is paid to room dimensions and design. For optimum viewing and listening, the seating is placed at the proper distance from the screen, the floor may be ramped or have risers, and the walls are often nonparallel, projecting outward from the screen.

The speaker placement and selection is calculated to achieve surround sound.

Dolby digital sound consists of six speakers and a low bass subwoofer installed throughout the room, either in the floor or in the walls. The ceiling, floor and walls are soundproofed to help reduce the transmission of sound into other parts of the home.

To accurately replicate the film as closely as possible to the way the directors intended it to be, a home theater uses a wide screen with a separate projector, which is usually suspended from the ceiling. A direct-view television set, in comparison, will cut off a few inches of the picture.

The screen may be covered by drapery, which opens automatically when the lights are dimmed, as in a traditional movie theater. In other home theaters the screen may remain exposed, or it can be recessed into the ceiling and dropped



The same home theater, viewed from the opposite direction, showing the ceiling mounted projector and the wall of equipment in back.

down for viewing. In the back, an alcove encloses the audio and video support equipment.

The budget for building a dedicated home theater will most likely be higher than that for an entertainment room. However, a home theater creates a very special environment that simply cannot be captured in a room where other activities are going on. For certain people, the pleasure of watching in their own home a favorite movie in its entire cinematic splendor, makes the price tag well worth it.



Photo: Courtesy of Zach Simpson, Innovative Systems
www.innovativesystems-av.com

FLOORING TRENDS: Bamboo Flooring

When you think of bamboo, you may not immediately envision your dining room floor. However, bamboo has been used as a structural building material in Asian cultures for centuries. Now, an increasing number of homeowners in America are finding it to be a wonderful flooring material.

Bamboo has a clean, warm, elegant look that is also unusual and exotic enough to attract favorable attention. It is a durable flooring material, and can be harder even than oak and more dimensionally stable than maple, depending on the hardness of the particular plants from which it is processed.

One very appealing advantage bamboo flooring offers is that it is produced from an environmentally sustainable and rapidly renewable resource. Hardwood trees require 40 to 60 years to grow.



Exquisite site-finished flat grain "caramelized" bamboo flooring.

Bamboo is a fast-growing grass, and harvesting it is like cutting your lawn. The plant is not destroyed, but rather continues to grow—about 40 feet in three years.

The bamboo is cut into one-inch wide strips that are laminated together to form planks of similar size to hardwood flooring. The strips can be laminated horizontally,

so that the bamboo appears as long, one-inch wide stripes on your floor. In another method, the bamboo strips are laminated vertically, and the bamboo appears as long, 1/4-inch stripes.

The bamboo, left in its natural state, is a beautiful blonde color.

Carbonized bamboo flooring results from a process of heat and pressure being applied to the bamboo. This process turns the bamboo a rich amber color that permeates through the bamboo. This process also produces a slightly softer material.

Caring for a bamboo floor is basically the same as for any traditional hardwood floor. Vacuum or sweep the floor regularly, and remove spills promptly. Clean the floor with a hardwood floor cleaner that does not contain wax or ammonia. Place mats at the exterior doors to collect sand and grit that could damage your floor finish, and install protectors under the legs of furniture.



Photo: By Steven Young / Courtesy of Timbergrass LLC
www.timbergrass.com

Emotional Sanctuary at Home

A spa is a quiet, soothing environment, designed specifically to help you relax, refresh and rejuvenate your mind, body and spirit. Everything in the spa, from the visual beauty to the calming sounds, is carefully placed to assist you in reaching this goal. After the rapid pace of a typical day, who would not welcome the opportunity to take a much-needed break at the spa?

Now you can spend time everyday in the comfort and familiarity of your very own home spa in your bathroom. Manufacturers, like Kohler Co., have designed bathroom products that make that desire possible.

Celebrating the rhythmic grace and beauty of flowing water and the calming integrity of natural materials, Kohler Co. launched

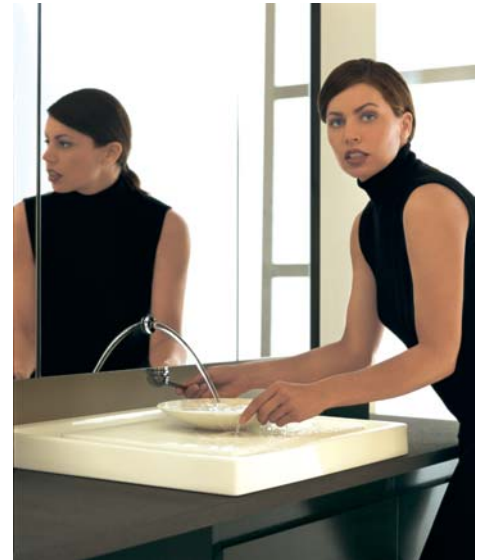
the Purist™ Suite this year, the industry's first coordinated home spa collection for the bath. Portraying contemporary, minimalist aesthetics and leading-edge technology, the Purist home spa products make a simple and elegant design statement.

Assimilating such unique elements as natural lavastone countertops; artistically designed wet-surface lavatories and faucets integrated within mirrored storage to capture the visually arresting interplay of flowing water; and an ultra-deep soaking bath with effervescence and chromatherapy, the Purist Suite captures the very base elements of Earth with Zen-like simplicity to create pure harmony with water. With more than 10 components,

the Purist Suite celebrates and expands upon timeless bathing rituals that offer you, the homeowner, an enchanting escape—an ultimate peacefulness and sense of tranquility.

□

Below and Right: The Purist bath is engineered of high-gloss acrylic to be a shell within a shell, incorporating an overflow rim that allows the individual to be fully immersed. In addition, the bather has the option of adding effervescence and chromatherapy.



Above: The above-counter Wet Surface lavatory has a raised, flat center surface that sits flush with its outer edges. When water cascades on to its surface, it slides away into a surrounding channel. Mounted to the wall, the mirrored cabinet with an integral laminar-flow faucet creates a stunning image of flowing water.



Left and Above: The Wading Basin lavatory boasts planes similar to its Wet Surface counterpart, but is characterized by a shallow flat basin. Both the Wet Surface and Wading Basin lavatories function with two removable fine porcelain hand basins. The open-bottom hand basin creates a seal with the lavatory's surface when filled with water, so it can be used as a wash basin. Simply lifting it releases the contents. The second hand basin is designed as a bowl and can be used with the lavatory or to transport spa treatments or other contents to additional areas within the room.



This Kitchen Becomes an Asset!

It has been said that kitchens sell houses, but in the case of this Malvern colonial, our clients bought the house in spite of the kitchen. Dark cabinets and an inefficient layout characterized the original kitchen.

The homeowners' requests: lighten and brighten the room, create better storage and workspace, retain the eat-in area, transition between the kitchen and the attached family room and work with the existing hardwood floor.



After

The new plan introduced:

- a 33" pantry that is 24" deep to house countertop appliances
- a 12" deep pantry for canned goods and staples
- an island to fill the too-wide space in the middle of the floor and add a 60" uninterrupted work area
- deeper, taller wall cabinets
- a breakfast bar that overlooks the flagstone patio and pool (Perhaps these features sold the house!)
- a bookcase for the cookbook collection

Features of the kitchen include:

- 42" high, full overlay, raised panel cherry cabinets with a low sheen, golden finish
- stainless steel appliances to work with the existing refrigerator
- a GE microwave with a trim kit that appears to be ventless
- a warming drawer with a cabinet drawer front
- Corian countertops with a routed edge treatment and a large white integral sink (Concrete was our inspiration!)

- antique nickel hardware
- a combination of recessed and pendant lighting
- a stainless steel pullout spray faucet and two soap/lotion dispensers
- ceramic tile made to look like tumbled marble (Color was the deciding factor between stone and ceramic.)

As with all our projects, we at HUB Design/Build enjoyed creating an asset to the home that fulfills the individual needs and desires of these homeowners. If you are looking for a rewarding remodeling experience, please contact HUB Design/Build at (610) 688-7475.



HUB Earns Certifications

(continued from page 1)

We at HUB Design/Build are pleased to announce that our two owners, Mark Stephenson and Lynne Stephenson, have qualified as Certified Remodelers. In addition, three of our lead carpenters: Steve Ostroski, Steve Coleman and Matt Hunsecker are now Certified Lead Carpenters. Lynne is the first female member of the Delchester NARI chapter to receive the CR designation.

This fall Mark and Lynne will start NARI's Kitchen and Bath Designer Certification program.

If you are interviewing a remodeler, be sure to ask if he or she is a member of NARI. Visit the NARI website to learn about the National Association of the Remodeling Industry membership. This website also provides information about hiring a remodeling company and how to set about planning a project—be it large or small.



Before



After

