

HUB Design/Build
765 Newtown Road
Villanova, PA 19085
Phone: (610) 688-7475

AUTUMN

2005

PRSR STD
U.S. POSTAGE
PAID
HICKORY NC
PERMIT NO 212

HUB OF THE Home

Custom Design • Professional Remodeling

Courtesy of HUB Design/Build
Telephone (610) 688-7475
www.HUBdesignbuild.com



Innovations and Solutions



DelCY

DelChester Contractor
of the Year

Photos: By James F. Wilson/The New American Home 2005



Suite Serenity

After their last child moves out and is finally on his own, many homeowners these days are seizing the opportunity to expand their master bedroom into the adjacent empty bedroom space, creating a grand master suite. Then there are

(continued on page 2)

- Suite Serenity
- Having It All
- The World's First
- Make a Splash

IN THIS ISSUE

HAVING IT ALL

When designing new kitchens for older homes on the Main Line, a frequent challenge for the **HUB Design/Build** team is to find ways to make the most of very limited available space. It is unusual to have the chance to design a kitchen in an expansive area with very few dimensional restrictions.

The dynamic new kitchen pictured here was one of those unique and exciting opportunities. It is part of a whole-house remodel that will be featured in its entirety in our next newsletter. The kitchen is located in a great room that is approximately 30' x 30'—voluminous!

(continued on page 4)



After

TELEPHONE (610) 688-7475

WEBSITE www.HUBdesignbuild.com

those parents who simply want a quiet respite from the pre-teens who seem to have taken over their house. An addition to their home provides a tranquil spot for a master suite retreat. Or perhaps it is simply that the homeowner spent some wonderful days in a five star hotel suite with all the creature comforts, and now wants to recreate that luxurious atmosphere with his own "house candy." Whatever the reason for the decision,



Stylish lighted closet rods add sparkle to this walk-in closet.



The folding glass wall expands the sitting room to the outside, bringing in light and fresh air.



When activated, the mirrors on both ends of the tub become TV screens.

master suites are the third most popular remodeling project today, right after kitchens and baths. With continuous remodeling shows on television as inspiration, people are ripping out, reconfiguring and adding on to their master bedrooms as never before.

The master bedroom suite of the 2005 New American Home is a perfect example of the kinds of amenities people are asking for in their new master suites. The bedroom itself is ample, with plenty of space for a mini-kitchen tucked into an alcove for late-night snacks. On the wall opposite the four-poster bed is the latest in electronic living—a home entertainment center with a 42-inch plasma screen. Through the door one gets a sneak peek at the bathroom and its sumptuous two-person walk-in shower with multiple body sprays, a rainshower head, and a comfortable bench. In addition, a Kohler Sok overflowing tub, as well as his-and-her vanities, a separate closet for the toilet and bidet, and a private outdoor garden with a hot tub complete the spa feeling. Just around the corner is a spacious walk-in closet providing drawers, cabinets and generous hanging capacity, along with the convenience of a full-size laundry room. The suite's flexible sitting room can serve as a library or an office, an exercise room, a game room, or a comfortable TV space, depending on the desire of the homeowner. But, most importantly, the entire master suite serves as a refuge from the hectic pace of life outside those serene walls. □

Using state-of-the-art laser-etching equipment, PictureThisOnGranite transfers pieces of art in minute detail onto black granite. The etching is then hand-painted, creating depth and definition. In an already glamorous kitchen, this granite sunflower mural is a real eye-catcher! The etching has been treated with a protective sealant that should be re-applied twice a year for continued protection.





The World's First

The world's first stand-alone built-in microwave drawer, the Sharp Insight Pro, can be placed at the most convenient height for frequent use. The drawer opens at the touch of a button. There is no need to remove the dish from the oven to check or stir the food. Attendees at the 2005 Kitchen and Bath Industry Show voted the Insight Pro the Best New Kitchen Product of the show.

Every year amazing new kitchen appliances are introduced to the market, each one promising to make our daily life more comfortable and efficient. Here are a couple of recent award-winners.



The world's first built-in capsule coffee system, the Miele CVA 2000 series, uses sealed Nespresso capsules, each containing just enough ground coffee for one cup. The appliance produces coffee, espresso, cappuccino, milk froth or simply hot water. The system can be set up underneath or integrated with the cabinetry, and it does not require a fixed water supply connection. The CVA 2000 series won Miele the prestigious international Red Dot award for product design.

■ Kitchens have become so much more than functional spaces in which to prepare meals. Homeowners are making very personal design statements with their kitchens. From elegant countertops to stylish wood cabinets, today's kitchens provide a virtual feast for the eyes. The most impressive feature of many kitchens is the stainless steel professional range or cooktop with the mighty hood overhead. And don't forget the grand finale—the decorative backsplash—strategically located between the two.

Make a Splash

It is when designing this important focal point in the kitchen that some of the most creative juices get flowing. Trendy backsplash treatments in contemporary-style kitchens range from copper or stainless steel tiles, to small glass mosaics. In more traditional-style kitchens, murals are popular using hand-painted ceramic or porcelain tiles, ink-impregnated tumbled marble, or laser-etched granite. Each of these products allows homeowners the chance to individualize their kitchen spaces in imaginative ways. □



Select your favorite photograph and StoneImpressions will turn the image into a unique stone mural for your backsplash. The inks used to create this fruit basket mural on tumbled travertine have penetrated permanently into the stone and are guaranteed for 75 years. The image is protected by two different sealants. Always use mild, non-abrasive cleaners for maintenance.



Radiant heat was installed under the hardwood floor.



A roomy wine rack is accommodated at the end of the island.

HAVING IT ALL

(continued from page 1)

So what do you do when you have all the kitchen space you could possibly want? As with all kitchens you still need to carefully plan the food preparation area in order to reduce unnecessary movement. The beauty of a spacious kitchen is that you can also plan secondary prep areas so that two or more cooks can work simultaneously without getting in each other's way.

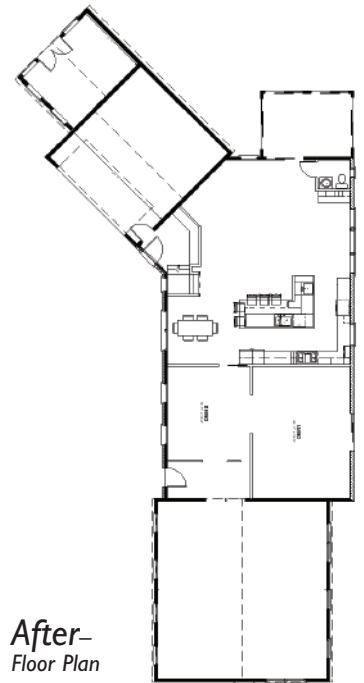
Delineating the outer perimeter of this kitchen is a massive L-shaped island with a glamorous granite countertop. The casual eating area comfortably seats five. Housed in the island are two stainless steel sinks and a

dishwasher conveniently placed adjacent to the main sink. This L-shape theme continues in the wall and base cabinets that contain all the other appliances. Just a few steps away from the main sink is a 48" Sub-Zero side-by-side refrigerator, as well as a 36" Wolf cooktop with a 42" hood. The hood is complimented by a decorative tile backsplash and 6" pull out spice racks flanking each side.

A 30" Jenn-Air double wall oven unit, across from the secondary sink, rounds out the food prep circuit. From the kitchen one can enjoy a clear view of the home's main entry and the pool through the various windows and glass doors, which also bring refreshing light and air into the space.



Before—this kitchen dates to the late seventies.



*After—
Floor Plan*

