

HUB Design/Build
765 Newtown Road
Villanova, PA 19085
Phone: (610) 688-7475

WINTER

2006

PRSR STD
U.S. POSTAGE
PAID
HICKORY NC
PERMIT NO 212

HUB OF THE Home

Custom Design • Professional Remodeling

Courtesy of HUB Design/Build
Telephone (610) 688-7475
www.HUBdesignbuild.com



DelCY
DelChester Contractor
of the Year

Photos: Courtesy of Travis Industries, Inc. (www.travisproducts.com)



Light my Fire

There is something quite magical about sitting in front of a fireplace and watching the flames flicker and dance. Time seems to stand still and the stresses of the day fade away...

(continued on page 2)

The Looking Glass gas fireplace features a one-way mirror that displays when the fire is off. It also includes a hidden aromatherapy tray.

IN THIS ISSUE

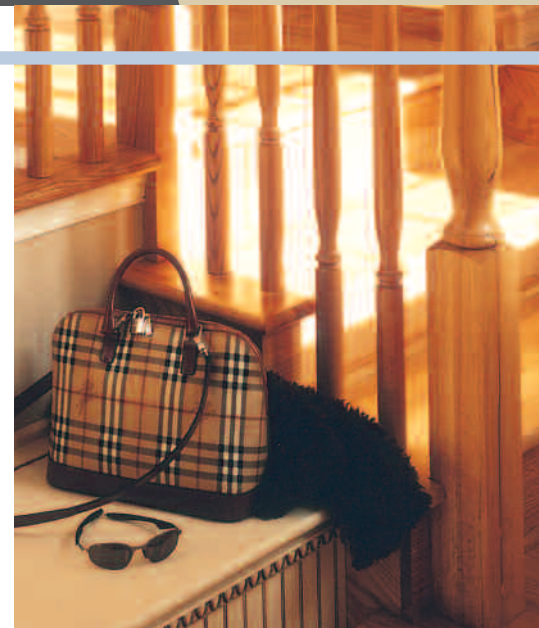
RAISING THE ROOF

- Light my Fire
- Raising the Roof
- Hot! Hot! Hot!
- Entrance Exam

Our Autumn 2005 newsletter featured a spacious kitchen that was part of whole house remodel completed by **HUB Design/Build**. This issue gives you a peak at the rest of the project, which was multifaceted. The total remodel involved 1900 square feet, and was skillfully orchestrated so that our clients didn't need to move out.

Our clients' wish list included increasing the living space in their home, updating the kitchen/family room area, and adding amenities throughout. A great way to gain more living space in an existing home is to "raise the roof!" Their home was a 1960s split-level with a one-story kitchen addition. We added a second floor over 2/3 of the first floor area, increasing the living space by 900 square feet. The HUB design team took great care in this challenging project to ensure a continuous exterior roofline which functions practically as well as esthetically.

(continued on page 4)



Light my Fire

(continued from page 1)

as a pleasant dreaminess overtakes us. Add to that some fine food and soft music, and you have the recipe for a delightfully relaxing experience.

Fortunately, the fireplace is no longer limited to areas that can accommodate heavy masonry construction, and to have a realistic flame does not require chopping and hauling wood.

The fire upon the hearth is low,
And there is stillness everywhere,
And, like winged spirits, here and there
The firelight shadows fluttering go.

Eugene Field



Photo: Courtesy of Hearth & Home Technologies Inc. (www.hearthhome.com)



Photo: Courtesy of Dimplex North America Limited (www.dimplex.com)

The Soulstice gas fireplace is designed with a scaled-down footprint and low heat output for smaller rooms. It comes standard with a sleep timer so you can fall to sleep to the warmth and beauty of a fire. You can also program the unit to automatically light anytime, making it a much more inviting way to wake up than an alarm clock.

Gas and electric fireplaces have come a long way. Today their appearance is so convincing that it often takes a second look to distinguish them from the wood-burning variety. In addition, several gas and electric fireplaces have now been sized specifically for use in bathrooms, bedrooms and other intimate spaces. Although these mini-fireplaces have the capability of warming up a chilly room, they are designed to be used year 'round and in warm climates. Often the purpose is to create that special ambience that comes from firelight and glowing embers.

If you need the crackling and popping of burning wood in order to evoke the nostalgia you desire, some gas and electric fireplaces have those realistic sounds included as a part of the operation of the appliance. Or, you can purchase a CD recording and have it merrily snap-crackling in the background.

When purchasing a fireplace, consider the following:

- ❖ Direct vent gas fireplaces do not need a foundation or a chimney, as do wood-burning fireplaces. They burn efficiently and vent any combustion byproducts and moisture straight through the wall to the outside, preserving indoor air quality. Thermostatic and remote controls are often available.
- ❖ Electric fireplaces are convenient and flexible. They don't require a chimney, vent or gas line. You simply plug them into a 110 electrical outlet. They can be moved from room to room, as you please. They operate with or without heat. ■

The Corner Wall Mount electric fireplace conveniently fits into corner areas that are not typically used in a room. It comes with a 3-stage remote control, and the flames operate independently from the heater for year 'round use.

HOT!
HOT!
HOT!

What's hot in today's kitchen and bath appliances? The following items are hot in more ways than one!



Engineered Glass Products introduced a stylish, elegant and easy-to-clean alternative to traditional radiator towel warmers this year. The Thermique towel warmer is made almost totally of glass, with the glass itself serving as the heating element. Invisible thin film conductors achieve a quick warm-up and uniform heating across the entire surface of glass. The glass can be customized with personal monograms and is available in different metal finishes. The towel warmer was voted the Best New Bath Product at the 2005 Kitchen/Bath Industry Show in Las Vegas.

Gaggenau's ED 220 combination steam and convection oven combines the dry heat of a convection oven with non-pressurized steam. The steam generator can produce four different degrees of humidity in the oven. It is also possible to give bread a crispy crust or poultry a golden brown finish by setting the convection mode to 0% humidity. Cooking is quick and easy with minimal need for additional oils or fat. Vitamins and other nutrients in the foods are preserved. The ED 220 has been recognized with a Good Design Award from the Chicago Athenaeum.



Photo: Courtesy of Engineered Glass Products (www.egpglass.com)

Photo: Courtesy of Gaggenau (www.gaggenau-usa.com)

ENTRANCE EXAM

This organized back entry below features filler boxes and pegs to capture coats, backpacks, umbrellas, etc. There are mailboxes for storing special treasures to show mom and dad, and file drawers below with files for each day of the week. Shoes can be slid underneath the elevated bench and out of the traffic path.

If you find yourself stumbling over jackets and shoes left in disarray at the back entry, or desperately trying to locate your phone bill in the piles of mail you dumped on the kitchen counter as you walked in, you need to get your home's entrance organized. There's no better way to do that than with cabinets.

Think about your family's daily activities and all those things you are constantly bringing in and out of the house—purse, keys, boots, coats, backpacks, umbrellas, newspapers, and more. The traditional hall closet does not provide enough divided space to organize and store these items.

What about including a mail center to organize bills and other correspondence, removing it from your kitchen counter? You need a place to store supplies as well—such as envelopes, paper, stamps, address labels, pens, scissors, and tape, not to mention a wastepaper basket for mail items you don't wish to keep.

Once you list all the items for which you normally need space, a design can be drawn up for a multi-purpose entrance that can provide the perfect solution for all your clutter. Using custom and/or semi-custom cabinets, a truly unique space can be created that solves organization challenges in an attractive and functional manner. ■

Photos: Courtesy of Omega Cabinetry (www.omegacabinetry.com)



This multi-purpose entrance above includes cabinets outfitted like school lockers with hooks and shelving. A solid wood counter creates a handy desk for a kitchen mail center while apothecary drawers and divided shelves help you organize paperwork.

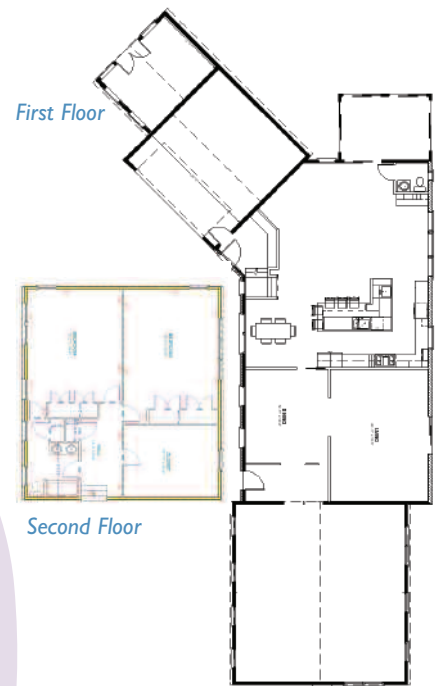




After



Before



First Floor



Second Floor

RAISING THE ROOF

(continued from page 1)

Downstairs, the aluminum and glass side entrance to the kitchen/family room is gone, and in its place is a handsome updated brick entry that complements the classic styling of the rest of the home. The steps leading to the original side entrance were removed and then replaced by an attractive flagstone patio. Just inside the door are a large coat/storage closet and a convenient seating bench, designed for storage as well as providing a place for removing boots and shoes.

A graceful hardwood stairway leads from the side entry to the new kitchen.



The second-floor addition includes this stylish full bathroom.

