

HUB Design/Build
239 Conestoga Road
Wayne, PA 19087
Phone: (610) 688-7475

AUTUMN

2006

PRSR STD
U.S. POSTAGE
PAID
HICKORY NC
PERMIT NO 212

HUB OF THE Home

Custom Design • Professional Remodeling

Courtesy of HUB Design/Build
Telephone (610) 688-7475
www.HUBdesignbuild.com



DelCY
DelChester Contractor
of the Year



SIMPLE Pleasures

Photo: Courtesy of Yorktowne Cabinetry (www.yorktownecabinetry.com)

Tranquil music, murmuring water, pleasant aromas, muted lighting, soothing temperatures, harmonious interiors. All this characterizes the delicious atmosphere of a luxury spa in a high-end resort. And as people experience the restorative qualities of a first-class spa in their hotels, many are recreating the same environment at home in their own stylish master bath retreats.

The current trend for the design of the master bath is inspired by Asia and influenced by the new urban chic.

(continued on page 2)

IN THIS ISSUE

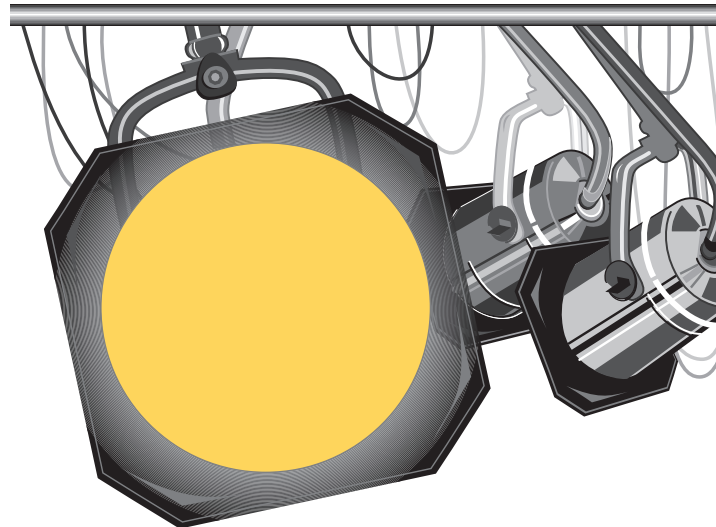
OUR NEW SHOWROOM IS NOW OPEN!

- Simple Pleasures
- Our New Showroom...
- Reflections on Glass
- What's Cool
- What's Hot
- Preview of Coming Attractions

HUB Design/Build is excited to announce that we have moved to a new location in order to better serve you.

Our **new office** and **showroom** will allow us to display custom cabinetry and various products related to your remodeling projects.

Please call **610-688-7475** to arrange for an appointment with one of our designers. See you at **239 Conestoga Road, Wayne, PA 19087.**



SIMPLE Pleasures

(continued from page 1)

Natural simplicity meets minimalist high-fashion and high-tech—and it works!

It makes sense that bathroom designers would look to Asia for inspiration. In Japan, bathing is a special daily ritual that is centuries old. The emphasis there is on creating a serene ambience through employing natural elements and removing unnecessary visual stimulation. The total bathing experience becomes a remedy for a stressful lifestyle—a desirable goal for the busy American homeowner as well.

In today's master bath this understated natural atmosphere is tastefully melded with an upscale Metro look to achieve the best of both worlds. Honest materials—such as stone, metal, glass, wood, bamboo and concrete—provide visual interest through the subtle textural changes from one material to another.

Cabinets are designed with little ornamentation or trim, which lets the natural material speak for itself. Deep chocolate brown is the new “it” color for cabinetry. Dark wood finishes, some bordering on black, create a reposeful mood. Long, lean handles

The Escale Suite takes its inspiration from Japanese ceramic tableware design, complemented by sleek furniture in engineered wenge wood.

and extended countertops emphasize restful horizontal lines. Innovative cabinet storage systems minimize distracting countertop clutter.

Attention is also given to setting the mood with lighting and music using pre-programmed electronic touch-screen controls. The soothing sounds of falling water can be introduced by installing a wall fountain or an overflow soaking tub. Including aromatherapy and chromatherapy options in the shower or tub is a healthy way to indulge other senses.

Advanced technology provides the means for enjoying other kinds of luxuries without disturbing the calm. For watching the news while shaving, an LCD TV screen integrated into the mirror appears when activated, and then vanishes when turned off. A large plasma screen TV, built into a cabinet at the foot of the tub, can be lowered out of sight or raised at the push of a button for pleasant viewing while bathing.

Last, but not least, placing a mini-kitchen close at hand makes it easy to grab those delectable snacks—just like at the top-notch spas. ■



Press a button and Lift-It smoothly raises and lowers a plasma or flat screen TV to a comfortable viewing level in the bathroom.



Reflections ON GLASS

The idiom used to be “People who live in glass houses shouldn’t throw stones.” Now it’s changing to “People who live in glass houses should throw parties.” Why? Because glass is trendy, glamorous and showing up everywhere in the home today—sinks, countertops, vanities, backsplashes, floors, and room dividers. If you have a unique piece of glass to show off in your home, do your friends a favor and invite them over!

Glass offers an incredible range of colors and can also be clear, frosted, iridescent, swirled, textured, polished, embedded, painted and even recycled. Dramatic visual effects are created by placing clear glass over metal, transforming the translucent glass according to the color of the metal selected. Installing lighting inside a glass vanity makes the furniture piece glow from within. Glass can be processed into many different sizes and shapes, from tiny mosaic tiles to large slabs more than an inch thick.

Since glass is non-porous, it is very hygienic and does not accept stains or bacteria. Clean it with any standard glass-cleaning product. Although glass is highly cold-and-heat-resistant, manufacturers recommend that pots taken directly from the oven be placed onto a hotplate whenever possible. Glass is very durable, but it can scratch. Minimize this problem by choosing matt finishes for glass floor tiles in high-traffic areas. Having a texture beneath the surface of a glass countertop helps to mask wear and tear.



The intriguing texture in this 1-1/2" thick ThinkGlass countertop was formed within the glass, while the surface remains silky smooth.



The elegant hand-blown glass Coppa pedestal in “Peach” coordinates with a laminated glass vessel sink.



Photo: Courtesy of Crossville, Inc. (www.crossvilleinc.com)

Illuminescence glass tiles are textured front and back, causing surfaces to come alive with unusual visual depth.

What's Cool

Thermador's Freedom Collection features freezers, refrigerators and wine coolers as independent modular columns in multiple widths. Each column is fully flush-mounted and can be completely integrated for a modern seamless look. The columns offer great versatility in that you can place them virtually anywhere and in a wide variety of configurations. They come in stainless steel or in a panel-ready version that you can customize to match your cabinetry.

What's Hot

The new TurboChef 30-inch Double Wall Speedcook Oven allows you to prepare gourmet meals up to 15 times faster than conventional ovens. The technology features heated air blown through the oven cavity at speeds up to 60 mph. A 12 lb. turkey cooks in 42 minutes, retaining all the natural juices often lost when using conventional ovens. The stylish hearth-shaped upper oven door is available in stainless steel, as well as six attractive colors.



Photo: Courtesy of TurboChef (www.turbochef.com)

Preview of Coming Attractions

To whet your appetite, we are focusing on just a portion of an amazing entire-house remodeling project recently completed by **HUB Design/Build**. Stay tuned, because the rest of the story will be continued in a future issue.

The stunning kitchen, featured here, fills the space once occupied by a tiny kitchen and separate dining room dating from the mid-fifties. The wall dividing the kitchen and dining room came down, along with the roof overhead. Then the left side of the home was extended by 12' and the back by 4'. Now there was plenty of open space in which to design exactly the kitchen of our clients' dreams.

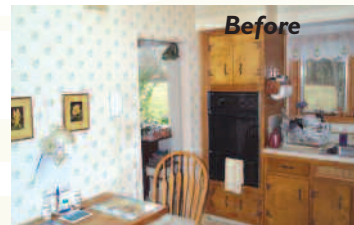
These homeowners love to cook, and wanted a kitchen that would not only be aesthetically pleasing, but exceptionally functional as well. The L-shaped wall and base cabinets contain all of our clients' state-of-the-art appliances, including a 36" Wolf 5-burner cook top with a 42" hood. The hood is enhanced by a 6" pullout spice rack on each side, and one additional pullout spice rack in the base cabinet. A Bosch dishwasher, GE microwave and 30" Jenn Air wall oven unit rounds out the food preparation circuit. Double pullout wastebaskets in the base cabinets next to the sink make it all so convenient.

The wet bar is also well appointed—with two built-in wine racks, an appliance garage and an additional single pullout wastebasket. Glass-inset cabinet doors lend ambience to the area.

Throughout the kitchen, HUB Design/Build installed cherry cabinets with a rich pecan finish, complemented by Colonial Dream granite countertops. The island, wet bar and desk are embellished with bead board. ■



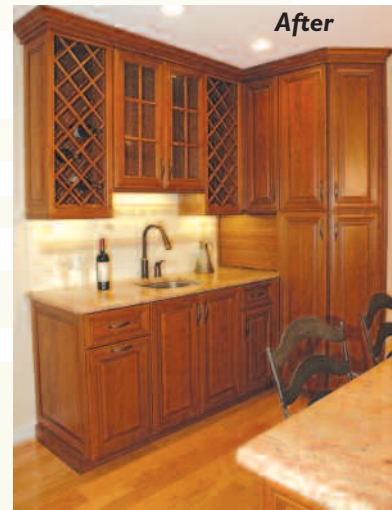
After



Before



Before



After



After



After