

HUB Design/Build  
765 Newtown Road  
Villanova, PA 19085

SUMMER

2004

PSRST STD  
U.S. POSTAGE  
PAID  
HICKORY NC  
PERMIT NO 212

# HUB OF THE Home

Custom Design • Professional Remodeling

Courtesy of HUB Design/Build  
Telephone (610) 688-7475  
www.HUBdesignbuild.com



Cheerful, optimistic yellow walls combine with Crossville's new Quartzite Series porcelain stone® on the floor and fireplace wall.

## COLOR'S MAGIC

by Barbara Schirmeister, ASID

Fairytale-inspired colors and magical hues dominate the color palette for 2004-2005. According to the Color Association of the United States (CAUS)—an organization which forecasts color trends for manufacturers of environmental and interior products—a major movement toward translucence and transparency with romantic, dreamlike qualities has evolved.

(continued on page 2)

Photo: Courtesy of Crossville, Inc. - www.crossvilleinc.com

IN THIS ISSUE

- HUB Wins Big 50
- Flooring Trends: Hardwood Floors
- Subtly Setting a Mood
- Two Very Different Bathrooms

## HUB DESIGN/BUILD WINS THE BIG 50

Each year, the editors of *Remodeling* magazine, the industry's premier trade publication, search for the fifty remodeling companies that distinguish themselves from the more than 62,000 remodeling firms in the country. This year HUB Design/Build was privileged to be selected as a member of the Big 50 Class of 2004, and to have been recognized as one of only five in the category of Fine Design. Thank you to our clients, employees, subcontractors and suppliers for their efforts in making this possible.



TELEPHONE (610) 688-7475

WEBSITE www.HUBdesignbuild.com



2004-2005 Environmental/Interiors Forecast Palette courtesy of the Color Association of the U.S. New York City.

The new palette has a high degree of warmth—emphasizing red and yellow-influenced color families, which are balanced by the cool air and water-inspired blues, greens and aquas. This forecast includes both cheerful brights to uplift us, as well as soft, mellow tones to relax us. It's all about “personal choice.” Look for

- nature-inspired colors, such as shades of bamboo and coffee, silvery greens, bronzed, burnished hues and sophisticated taupes;
- the emergence of blues—pale, ethereal, atmospheric blues, periwinkles and regal cobalts;
- gracious greens ranging from sage and olive to grassy spring greens and soft hues of celadon or sea glass;

- the hopefulness and optimism of yellow—as seen in the spicy colors of honey, saffron and curry and the warmth of soft buttercream, classic camel and opulent golds;
- red, the color of magic, ranges from corals to rust, from cherry red to crimson and burgundy;
- and more than ever before, we are “in the pink.” In fact, consumers just can't get enough pink—it's their protest against “khaki fatigue.” Flattering petal pinks, cyclamens, magenta and raspberry are the latest pink picks.

Special effects have become a hallmark of 21st-century design. Color is interpreted through iridescence, translucence, pearlescence and reflection. The result is depth, sheen and texture. Metals and metallic

effects are seen in new hues of copper, bronze, silver and gold for products across the board. Finishes range from aged patinas to the shimmer of stainless steel.

Today's colors, textures and special effects can create a retreat from technology and ordinary life, helping us forget the fret with a flight into fantasy. □



Internationally renowned color expert Barbara Schirmeister, ASID, has been a longtime member of the Color Association of the United States (CAUS) Interiors Committee, helping to formulate the annual Environmental/Interiors Forecast palette. She has served for many years as color consultant to a number of major manufacturers of home furnishings, building products and finishes.

## FLOORING TRENDS: Hardwood Floors

The natural beauty and warmth of hardwood flooring continues to make it one of the most popular choices for home floor surfacing today. The following descriptions may help in your decision-making.

**Solid** hardwood is defined as one piece of wood from top to bottom. This is excellent in most areas of a home on the ground level or above. **Engineered** hardwood is constructed from three or more layers of wood pressed together with the grains running in different directions, increasing dimensional stability. This can be used in basements and kitchens where the temperature and humidity fluctuates.

**Strip** flooring is linear wood flooring with board widths that are 3" or less. It is classified as **plank** flooring when the board widths are 3" or more. **Parquet** flooring is

These 4" ash planks from the Liberty Plains collection by Bruce reflect the current trend for wider-width wood flooring.



a series of short wood flooring pieces that create an attractive geometric design.

Wood flooring can be finished on the **job-site**, giving you endless possibilities for customizing your floor's stain and finish. **Factory** finished flooring has the advantage of less dust and noise involved in installation, but the color and finish options are more limited.

A **urethane** finish is generally used today because of the ease of maintenance. A hardwood floor should be vacuumed or swept regularly to remove dust and dirt before it damages the surface. When needed, use a wood floor-cleaning product.

Today's prevailing trends are for wider-width random-length planks, distressed surface treatments, highly defined grain patterns, and unusual—even exotic—species. Contrasting woods, widths, patterns and accents can be matched and blended to make your own individual statement. □



With Symphony speakers in the ceiling and Navigator keypad along the wall, it is easy to control the music source, volume, lights, etc. in this kitchen.



The Navigator K2 keypad in this hallway controls the Symphony in-ceiling speaker, as well as other functions.

## Subtly Setting a Mood

Multi-room entertainment is a very powerful element in a home environment, bringing sound and video to all parts of the home instantly, when you want it and where you want it. It is the secret ingredient that can add an extra touch of refinement to an elegant dinner or excitement to an at-home dance party. It helps set the mood, and for today's homeowner it has become as valuable to entertaining as a well-set table or the perfect hors d'oeuvres.

Multi-room entertainment is a state-of-the-art system distributing audio and video throughout the home, even outdoors, without the need for separate equipment in each room. The wires for multi-room audio are hidden in the walls. Speakers are mounted within the ceiling or the walls, barely noticeable. Control keypads or touchpads similar in size to a light switch are installed on the wall in each room or hallway in the home. The rest of the electronic equipment (CD players, DVD players, tuners, amplifiers, etc.) is in one convenient location, connected by wires to the various control pads.

Using centrally located equipment, a DVD can be enjoyed in the bedroom while a cable program is on the flat screen TV in the family room and a CD is playing in the kitchen. Some larger rooms, such as a great room, can include separate audio zones within the same room that can be individually controlled.

This kind of audio system is so subtle and

*The Symphony Extreme in-ceiling speakers are thin, water and temperature resistant, and are perfect for saunas, whirlpools, boats, or anywhere outdoors.*



The Navigator K2 in-wall keypad employs both hard keys and a high-contrast, high-resolution LCD touch-panel display. The hard keys provide tactile feedback (power, volume up/down, channel up/down and customizable source and genre buttons), while the LCD touch-panel screen changes based upon the source you select, bringing up on the screen only the relevant buttons.

unobtrusive, a casual observer may not even realize its presence. And even though the system is made up of extremely sophisticated components, it is amazingly simple to operate the user-friendly keypad or touchpad.

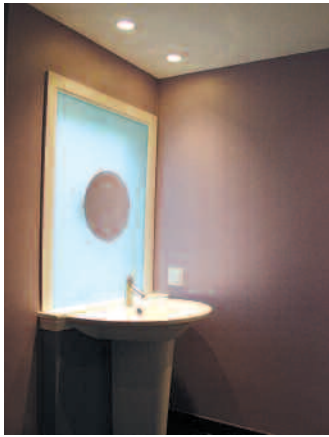
Scott Sylvester, Director of Technical Services for Sonance, lists some of the currently available additional items that homeowners are requesting along with their multi-room entertainment systems:

- Wireless remote controls that use touch screens to control audio, video, lighting, security, HVAC etc.
- Access to the internet using the multi-room audio system
- XM or SIRIUS satellite radio
- CD and DVD changers offering hundreds of music selections throughout the house

Looking into the near future, Scott predicts the following trends:

- Plasma TVs will become more popular as prices decrease
- Surround sound systems with 5-7 speakers entirely hidden in walls and/or ceilings will become normal installations
- Using the home's computer network wiring to control home appliances, lighting, security, etc., as well as to connect to the internet for streaming music and direct DVD movies into the home. □





## TWO VERY DIFFERENT BATHROOMS

The first bath can only be described as minimalist. As such, unconventional architectural photography was needed to show it off. Luckily for us, our client, Hung Tseng, stepped in and supplied the photography.



The second is a more traditional bath, with warm earth tone finishes. It is located in one of Wayne's beautiful stone homes.

HUB Design/Build's philosophy of "following" rather than "leading" our clients is the core reason that each of our designs is as unique as each of our clients. □

